

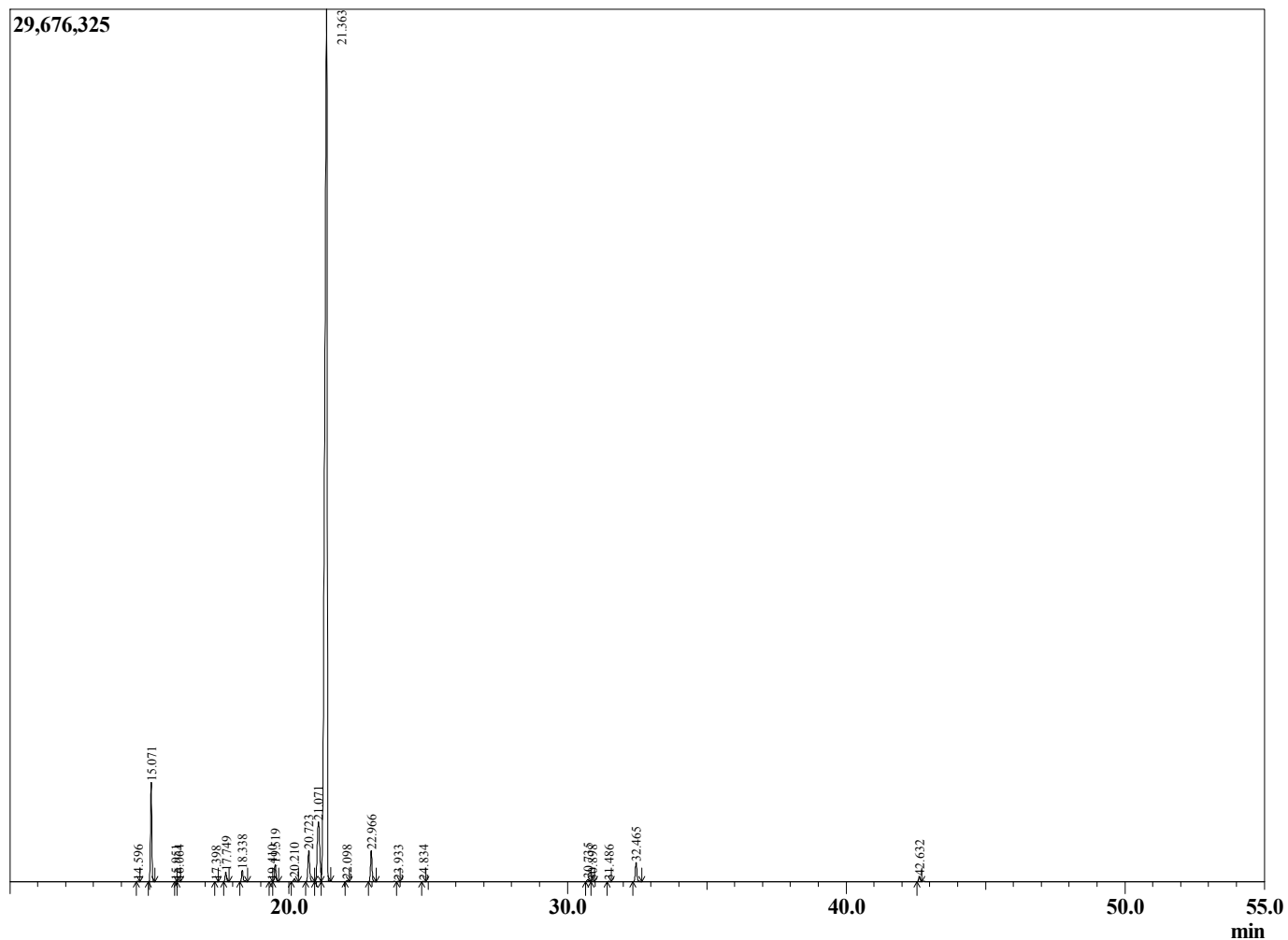
Sample Information

Sample Type : Essential Oil
 Sample Name : Eucalyptus globulus
 Injection Volume : 0.10

Eucalyptus Blue Gum
 Lot# AUK25-KT
 Country: Australia



Chromatogram Eucalyptus globulus



R.Time	Name	Area%
14.596	alpha-Thujene	0.03
15.071	alpha-Pinene	4.90
15.951	alpha-Fenchene	0.01
16.064	Camphene	0.03
17.398	Santolina triene	0.01
17.749	beta-Pinene	0.49
18.338	Myrcene	0.67
19.410	Herboxide I	0.05
19.519	alpha-Phellandrene	0.95
20.210	alpha-Terpinene	0.17
20.723	para-Cymene	2.06
21.071	Limonene	5.78
21.363	1,8-Cineole	81.28
22.098	3-Carene	0.04
22.966	gamma-Terpinene	1.78
23.933	Pinol	0.01
24.834	Terpinolene	0.01
30.735	Terpineol isomer	0.14
30.898	Borneol	0.03
31.486	Terpinen-4-ol	0.01
32.465	alpha-Terpineol	1.21
42.632	alpha-Terpinyl acetate	0.34
		100.00